

Lisa Weyrauther

# Lower Grounds

for clarinet, piano, double bass and electronics

2023

## Instrumentation

A-Clarinet  
Grand Piano  
Double Bass  
Electronics

This piece is about dreaming. A dream sometimes feels extremely clear with many details you can focus on, whereas other times it can seem like you are lost in a blurry cloud of impressions. The piece is a musical depiction of that dichotomy.

The score of this piece works as a timeline with fragments of music, the positions of which indicate when the fragments should be played. They are measured in bars of about 10 seconds, separated by dotted lines. The timestamps are only a guideline, do not use a stopwatch.

Some fragments are notated in boxes:

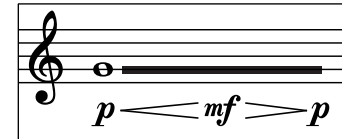


This signals that the timing of each fragment is independent and should be played abruptly, like a spontaneous sound event.

Other fragments are notated with regular barlines and a tempo indication. These are to be played in the specified tempo.

Arrows show when one player's fragment should be played in reaction to a certain point in another player's fragment. The reaction should not be played instantly, but rather after a pause, as if to maintain the flow of a conversation.

For longer notes, the length is indicated graphically:



## Electronics and amplification

The electronics in the piece consist of pre-recorded fragments that are played back on cue with the timeline. These fragments are to be recorded by the performers of the piece, and will be processed with reverb.

The live instruments are amplified with some reverb to blend them with the pre-recorded fragments.

## Symbols and techniques

### Clarinet

flat lip



Lower embouchure pressure for a foggy, jazzy sound  
Trill (start with lower note)

### Piano



Mute the strings around the note with your other hand,  
play the note while pressing down the pedal

### Double Bass

*scratchy*

Play with high and uneven bow pressure while still  
producing a pitch

The clarinet is transposed in the score.

Composed by Lisa Weyrauther in 2023  
Engraving and score editing by Dimitri Geelhoed

0'' 10'' 20'' 30'' 40''

A-Clarinet

Electronics (Clarinet)

Piano

Electronics (Piano)

Double Bass

Electronics (Double Bass)

The score is organized into six staves, each representing a different instrument or electronic processing. The timeline is marked from 0'' to 40'' in 10-second increments. Vertical dashed lines indicate the timing of specific musical events.

- A-Clarinet:**
  - At 10'', a box contains a treble clef, a flat key signature, a whole note, and the instruction "flutterzunge" above it. The dynamics are  $p < mf > p$ .
  - At 20'', a box contains a treble clef, a flat key signature, a quarter note, and the dynamic  $mp$ .
  - At 30'', a box contains a treble clef, a flat key signature, a quarter note, and the instruction "flz." above it. The dynamics are  $mp < mf > p$ .
- Electronics (Clarinet):** This staff is currently empty.
- Piano:**
  - At 0'', a box contains a bass clef, a flat key signature, a quarter note, and the dynamic  $mf$ .
  - At 10'', a box contains a bass clef, a flat key signature, a whole note, and the dynamic  $mf$ .
  - At 15'', a box contains a bass clef, a flat key signature, a quarter note, and the dynamic  $mp$ .
  - At 20'', a box contains a bass clef, a flat key signature, a quarter note, and the dynamic  $f$ .
  - At 25'', a box contains a bass clef, a flat key signature, a quarter note, and the dynamic  $mp$ .
  - At 30'', a box contains a bass clef, a flat key signature, a quarter note, and the dynamic  $f$ .
  - At 35'', a box contains a bass clef, a flat key signature, a quarter note, and the dynamic  $ff$ .
- Electronics (Piano):** This staff is currently empty.
- Double Bass:**
  - At 10'', a box contains a bass clef, a flat key signature, a quarter note, and the instruction "pizz." above it. The dynamic is  $mp$ .
  - At 20'', a box contains a bass clef, a flat key signature, a quarter note, and the dynamic  $mf$ .
  - At 30'', a box contains a bass clef, a flat key signature, a quarter note, and the instruction "arco" above it. The dynamics are  $mf > p$ .
  - At 40'', a box contains a bass clef, a flat key signature, a whole note, and the dynamic  $ppp$ .
- Electronics (Double Bass):** This staff is currently empty.

2